

## Upcoming Dates

**August 28:** First day of school  
**Sept 4:** Labor Day-no school  
**Sept 18:** Progress Reports  
**Sept 20:** Early Release  
**Oct 9:** Work Day-no school  
**Oct 10:** Progress Reports  
**Oct 18:** Early Release  
**Oct 31:** End of 1st 9-Weeks  
**Nov 7:** Report Cards  
**Nov 10:** Veterans Day-no school  
**Nov 15:** Early Release  
**Nov 22:** Work Day-no school  
**Nov 23-26** Thanksgiving Break  
**Dec 18-Jan 2:** Winter Break



DMS is a PBIS school

Positive Behavior Intervention  
& Support

Access Dixon Middle school website for additional information.

## B.A.R.K



### ELA Grading Scale :

|                   |     |
|-------------------|-----|
| Tests/Quizzes     | 30% |
| iReady/ReadTheory | 25% |
| Vocabulary        | 20% |
| Projects          | 15% |
| Classwork         | 10% |

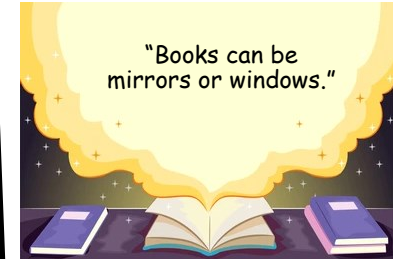
Dixon Middle School  
118 Ridge Field Ave.  
Sneads Ferry NC 28460

Phone: 910- 347-2738  
Fax: 910-327-1372

Email: [emily.hedrick@onslow.k12.nc.us](mailto:emily.hedrick@onslow.k12.nc.us)  
[lisa.fox@onslow.k12.nc.us](mailto:lisa.fox@onslow.k12.nc.us)  
[kaleigha.roach@onslow.k12.nc.us](mailto:kaleigha.roach@onslow.k12.nc.us)

2023-2024

"Books can be mirrors or windows."



Welcome to  
8th grade  
Language Arts

Mrs. Hedrick

Mrs. Fox

Ms. Roach

Class Syllabus

## Welcome to 8th Grade ELA!

We are excited to be your child's teacher for the upcoming school year. We are providing this pamphlet to hopefully answer some questions you may have concerning supplies, assignments, and communication.

Classroom procedures and the PBIS matrix will be enforced and taught in all classes the first week of school.

While teacher discretion is implemented, we work at being consistent with assignments and school-wide expectations in order to support both students and parents throughout the school-year.

### How can we communicate with our teacher?

The easiest way to reach us is via email.

[emily.hedrick@onslow.k12.nc.us](mailto:emily.hedrick@onslow.k12.nc.us)

[lisa.fox@onslow.k12.nc.us](mailto:lisa.fox@onslow.k12.nc.us)

[kaleigha.roach@onslow.k12.nc.us](mailto:kaleigha.roach@onslow.k12.nc.us)

[laura.walkup@onslow.k12.nc.us](mailto:laura.walkup@onslow.k12.nc.us) (EC services)

### When your child is absent...

**Check TEAMS!** It is important to keep up with assignments when absent to prevent falling behind.

Students need to keep close communication with their teacher for guidance.

We post weekly/daily on TEAMS so that parents and students are aware of material covered when they are out.

## Reading Requirements

Students will be expected to independently read **one novel per 9-weeks** and provide a report (directions will be posted in TEAMS).

Please visit the Onslow County Public Library website to apply for a LEAP Pass. (Electronic Access Program). This will give your student access to digital book check out.



(Digital books are only an option).

## What will we be learning this year?

Below, you will find the content that we will be learning over the course of the year. We have strategically crossed ELA with Social Studies to ensure a deeper understanding of the content in both subjects.

**1ST 9-WEEKS: DIVERSITY AWARENESS**  
Outsiders (Novel)\*  
Myths, Legends, and Folklore  
Fairy Tales and Cultural Awareness

**2ND 9-WEEKS: THEME SOCIAL RESPONSIBILITY**  
Community Awareness—Social Issues (research and proposal)  
Flowers for Algernon Unit \*

**3RD 9-WEEKS: ACADEMIC PLAN & READINESS**  
College and Career Exploration  
Mock Interviews  
Between Shades of Grey and /or Salt to the Sea (Novels)\*

**4TH 9-WEEKS:**  
Poetry and Mythology  
Standards Review Project  
Review and Remediation

\* Novels are ended with Films for multimedia component (Outsiders, Charlie, Holocaust themed film).

### Will there be homework?

Homework will consist of any unfinished work in addition to vocabulary list that will be given bi-weekly. Your child will be instructed on how to access programs and resources during the first week of school.

## Assignments

**TEAMS** will be your go-to spot to find assignments. The *Week at a Glance (WAG)* can also be found on our *Wakelet* page, which is linked to our teacher webpage(s).

We will also be using the following programs:

Common Lit iReady  
SchoolNet Actively Learn  
Read Theory  
Office 365

FORMS SWAY

\*Additional programs may be added as needed

## Supply List



While student 1:1 laptops are used daily, students will also need the following items:

### Required for ELA

- Avid Binder
- Loose leaf paper
- Pencils
- Tape/glue
- highlighters
- Colored pencils/markers
- scissors
- Backpack that has laptop section



**Tutoring:** Doors open at 7:10 a.m.

Please make arrangements with your child's ELA teacher for additional support offered during this time.